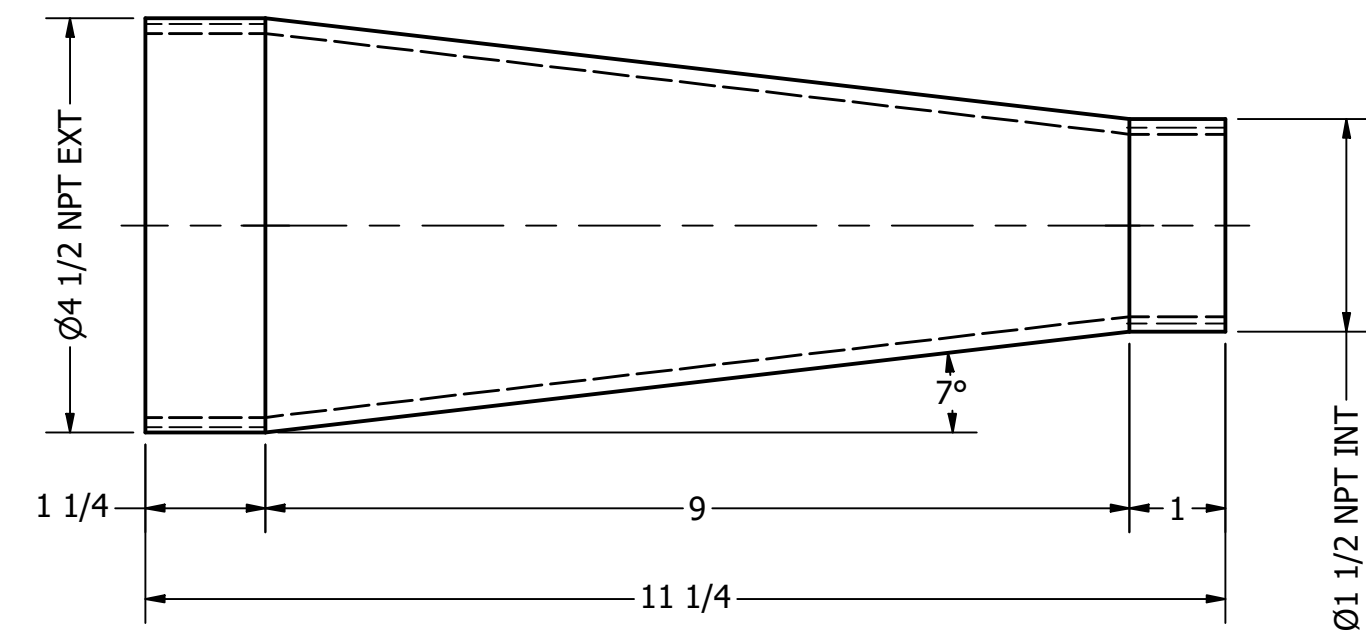
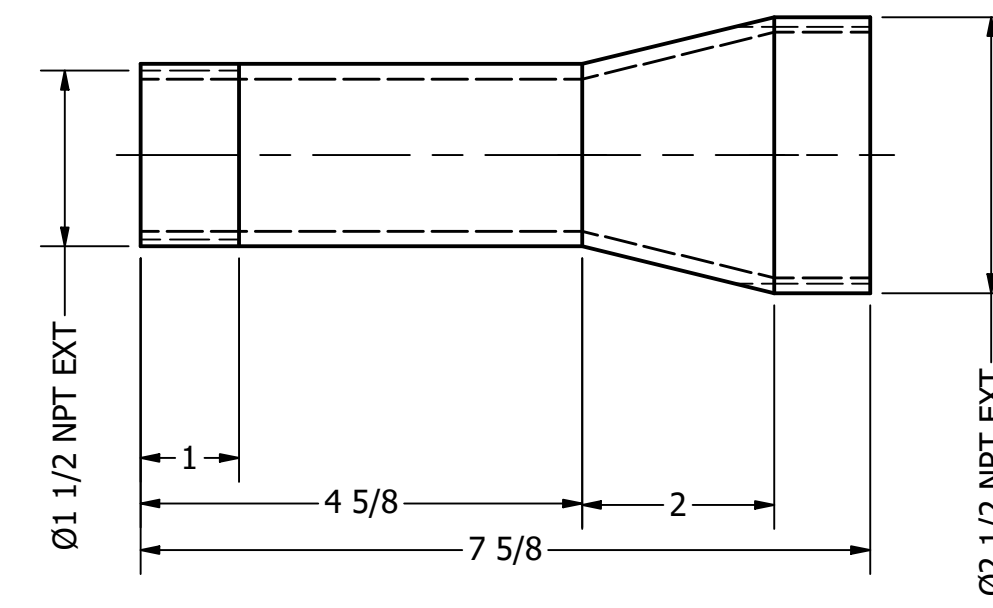


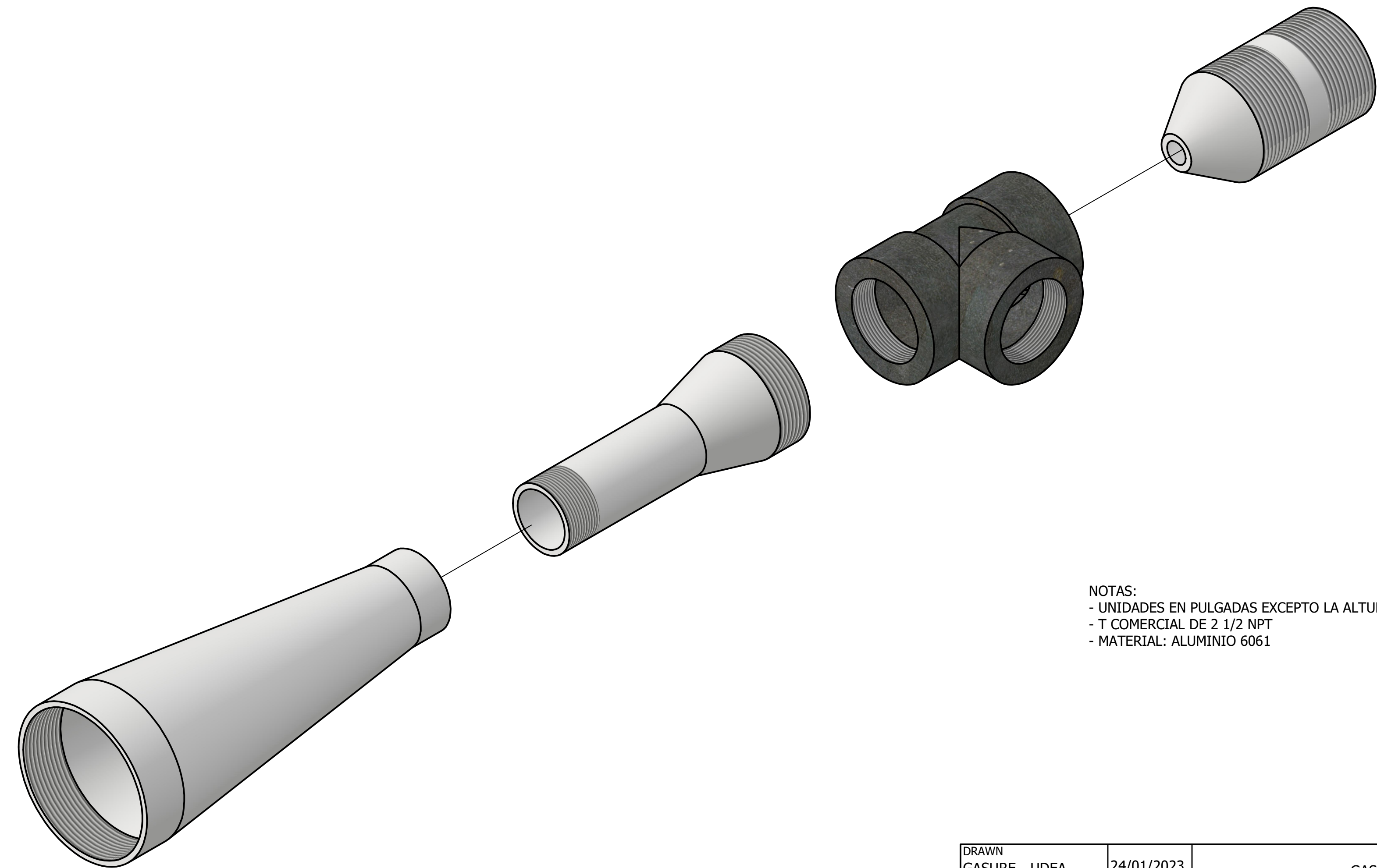
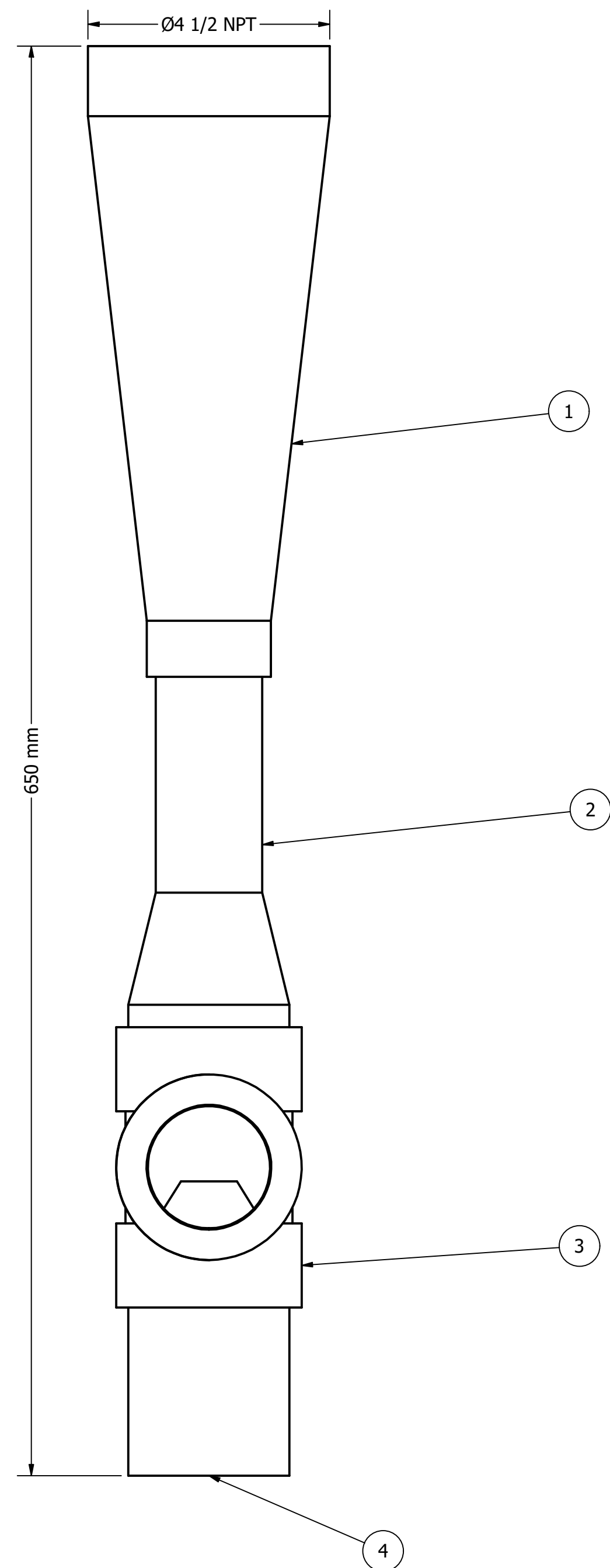
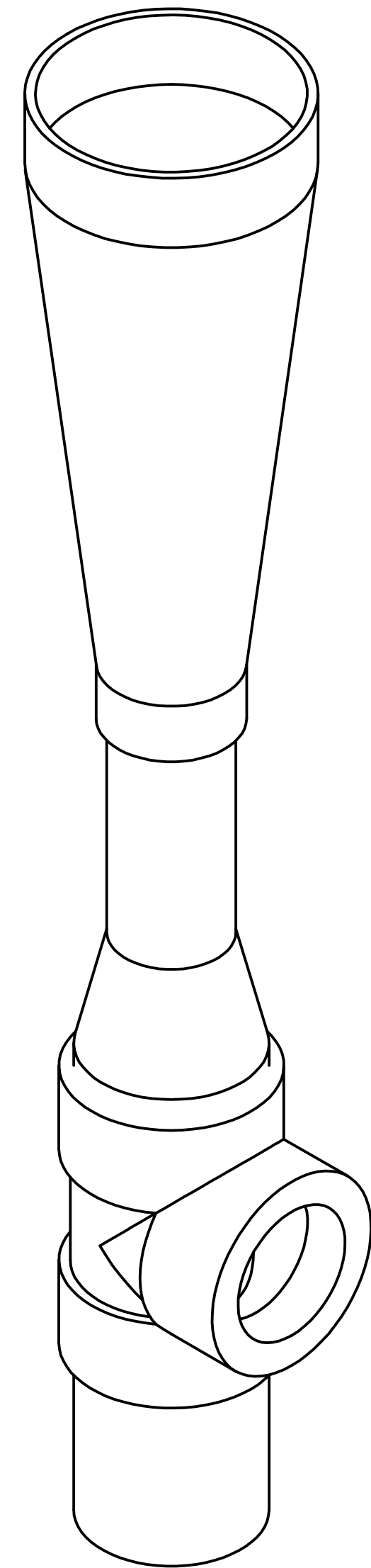
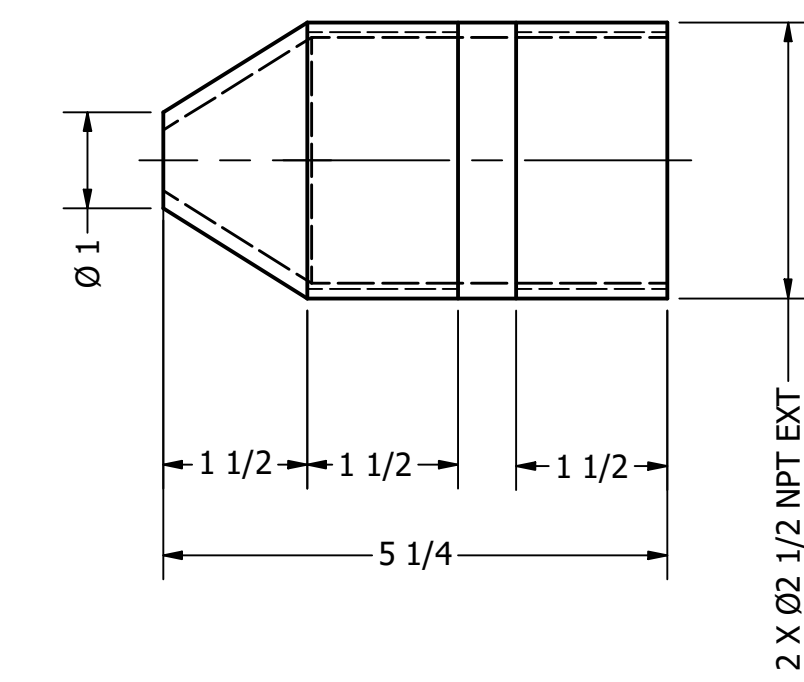
PIEZA 1: SECCIÓN DIVERGENTE




PIEZA 2: SECCIÓN CONVERGENTE



PIEZA 4: SECCIÓN VENTURI



NOTAS:
 - UNIDADES EN PULGADAS EXCEPTO LA ALTURA TOTAL DEL EYECTOR
 - T COMERCIAL DE 2 1/2 NPT
 - MATERIAL: ALUMINIO 6061

DRAWN GASURE - UDEA	24/01/2023	GASURE - UDEA	
CHECKED		TITLE	
QA		EYECTOR PARA FLAMELESS	
MFG			
APPROVED		SIZE D	DWG NO Eyector
		SCALE 1 / 2	REV
		SHEET 1 OF 1	